



Comprehensive Safety Action Plan

Transportation Advisory Board Presentation
March 19th, 2024



AGENDA

- Project Overview
- Work Accomplished To Date
- Mentimeter Survey
- Public Engagement
- Next TAB Touch Point
- Q&A

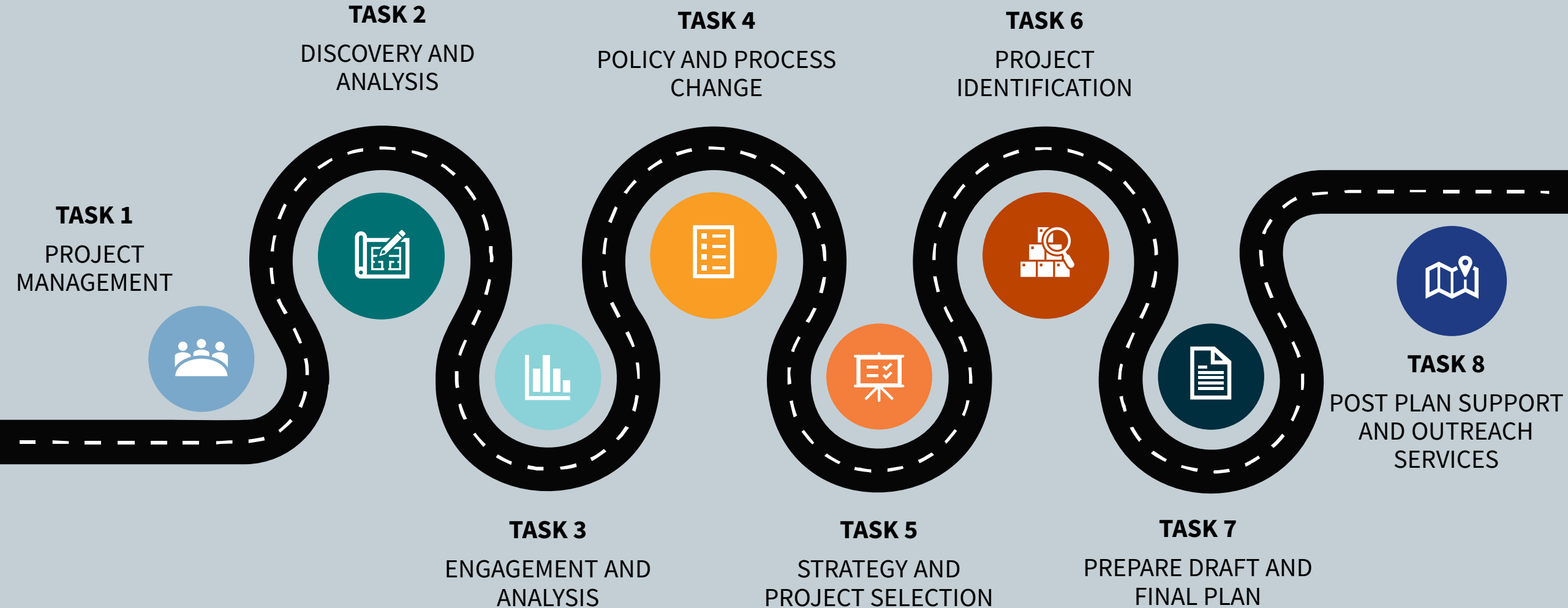
01 Project Overview

Comprehensive Safety Action Plan Goals

1. 30% Reduction in motor vehicle crash fatalities and serious injuries by 2030
2. Develop a Culture of Safety through collaboration, sharing responsibility for safety in the transportation system
3. Achieve SS4A Planning Grant certification and position Mesa for future SS4A Implementation Grants



Scope of Work

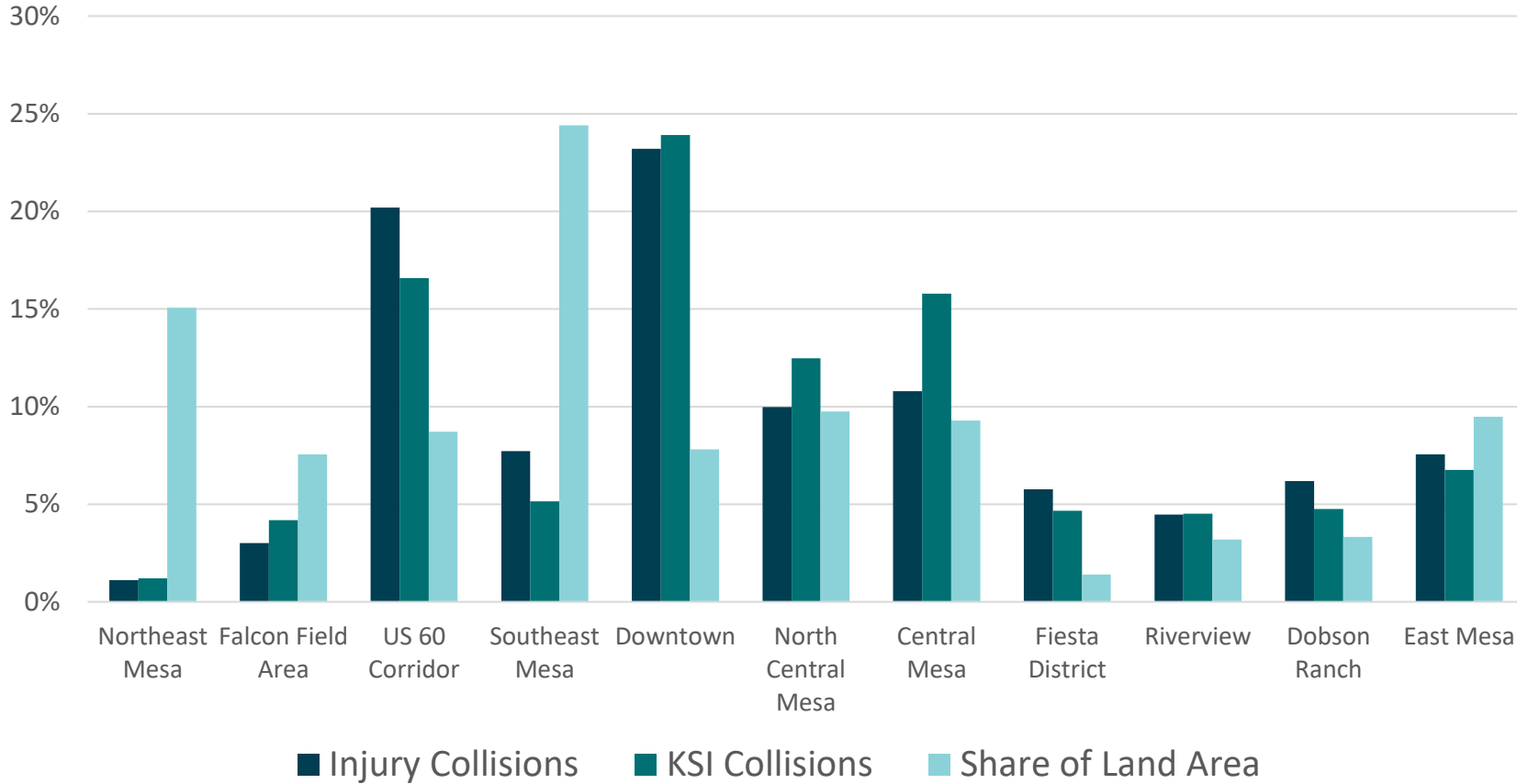


02 Work Accomplished To Date



Systemic Analysis (DRAFT)

Contextual Factor: Travel Shed



➤ 24% of KSI* collisions occur in the **Downtown travel shed**, which accounts for 8% of the City's land area

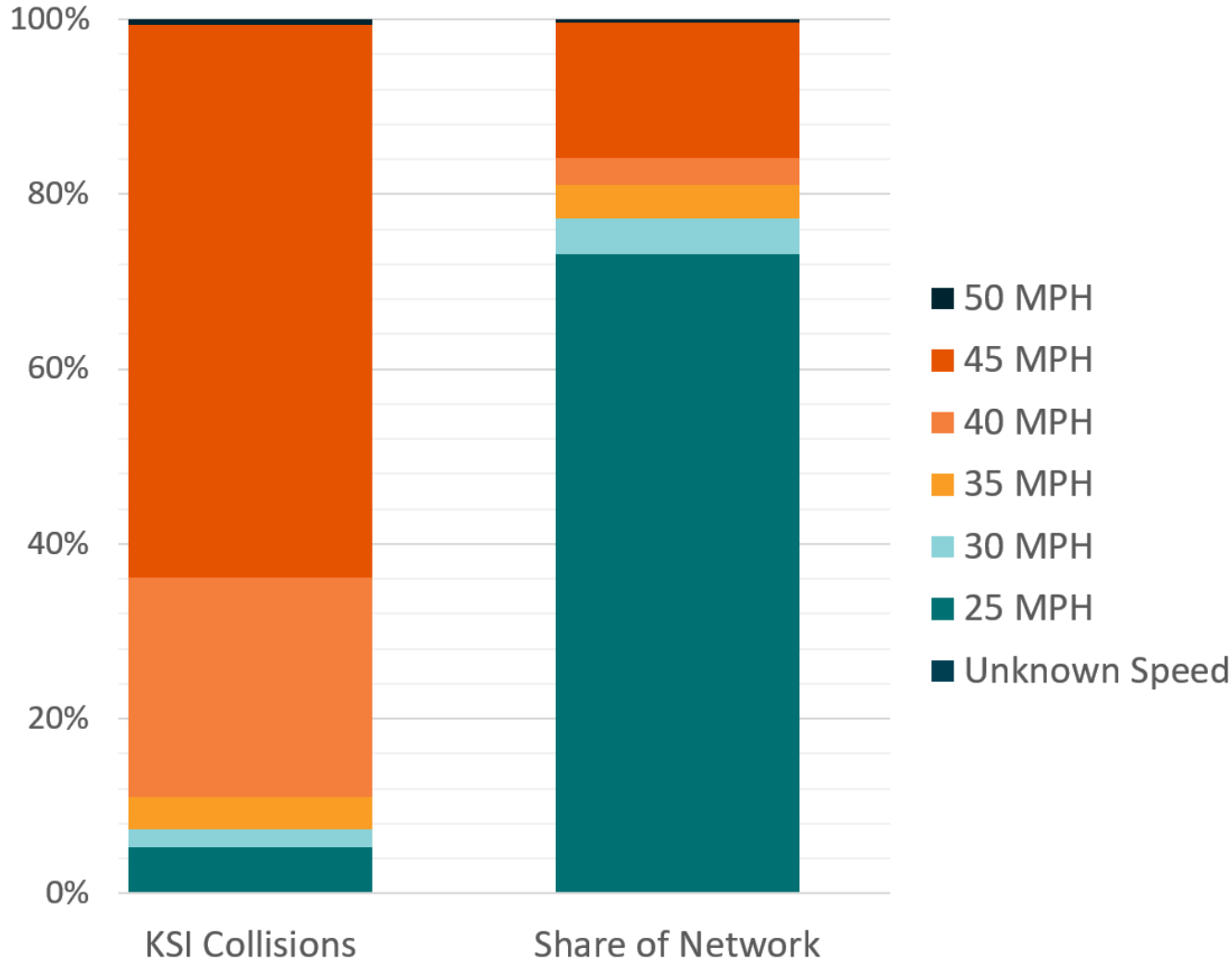
➤ 5% of KSI* collisions occur in the **SE Mesa travel shed**, which accounts for 24% of the City's land area

* Killed or Seriously Injured



Systemic Analysis (DRAFT)

Roadway Factor: Speed

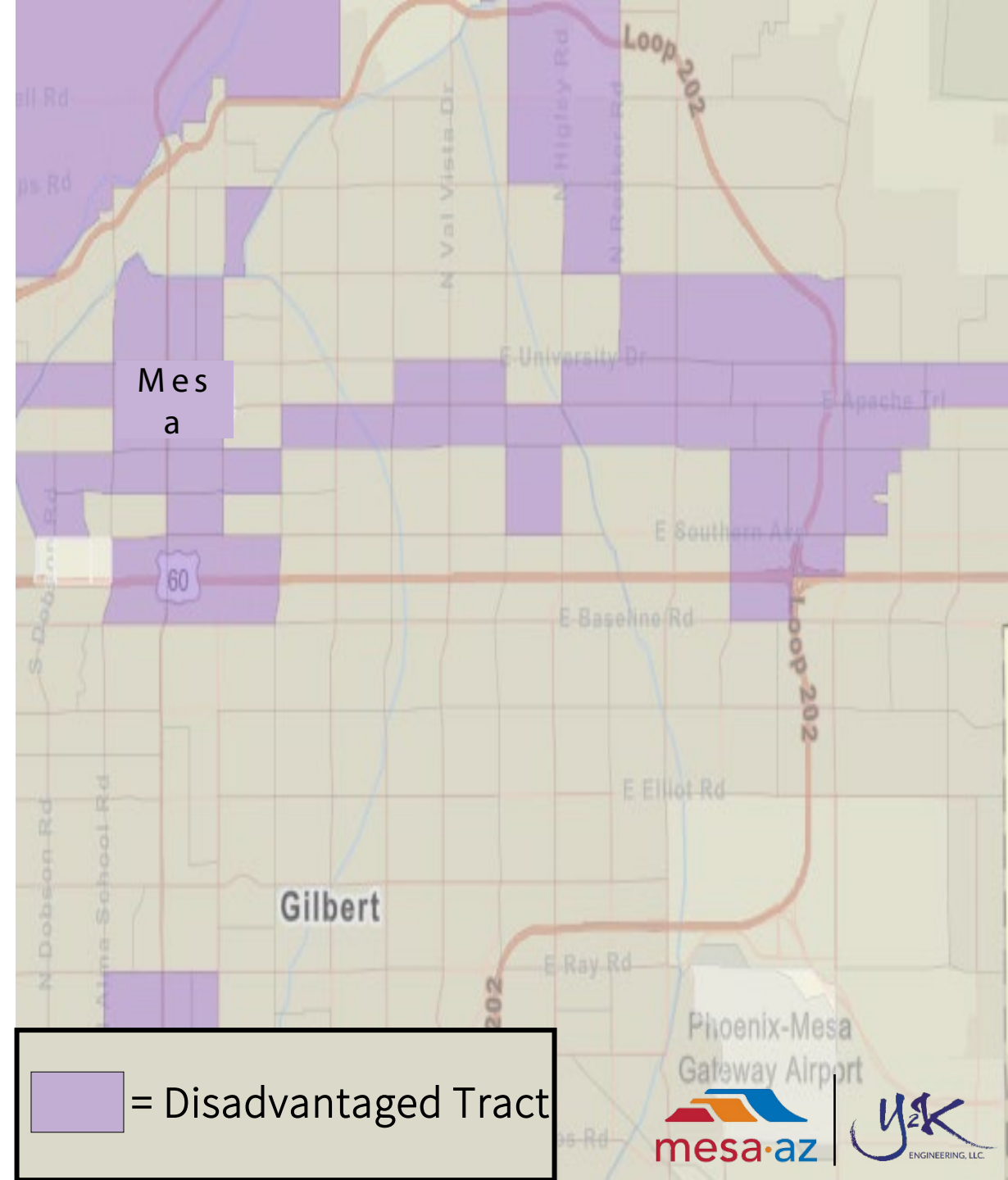


- 89% of KSI collisions on streets with 40+ mph posted speed
- These streets account for 19% of the network



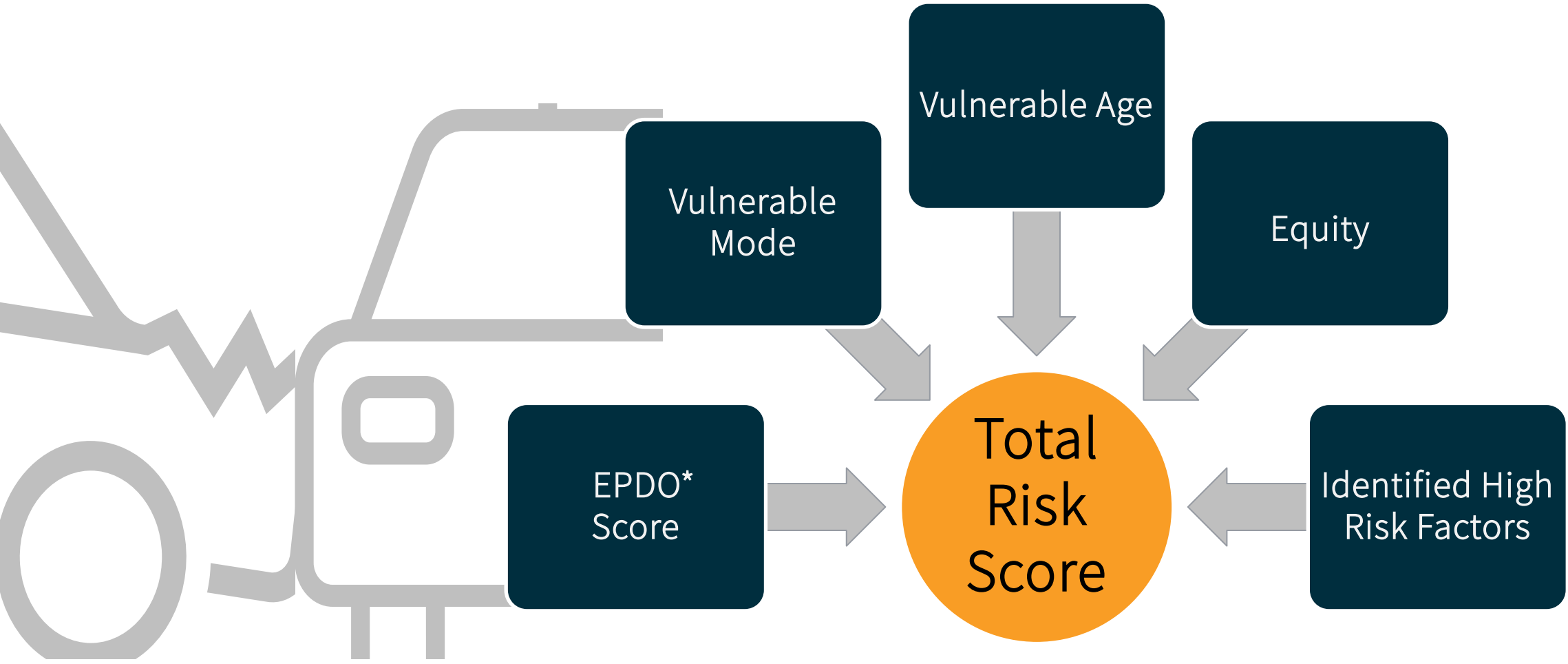
Equity Analysis

- Half of KSI collisions occur within federally defined Disadvantaged Communities
- These communities account for 15% of Mesa's land area
- Equity will be a factor throughout project tasks
 - Public Engagement
 - Project Prioritization





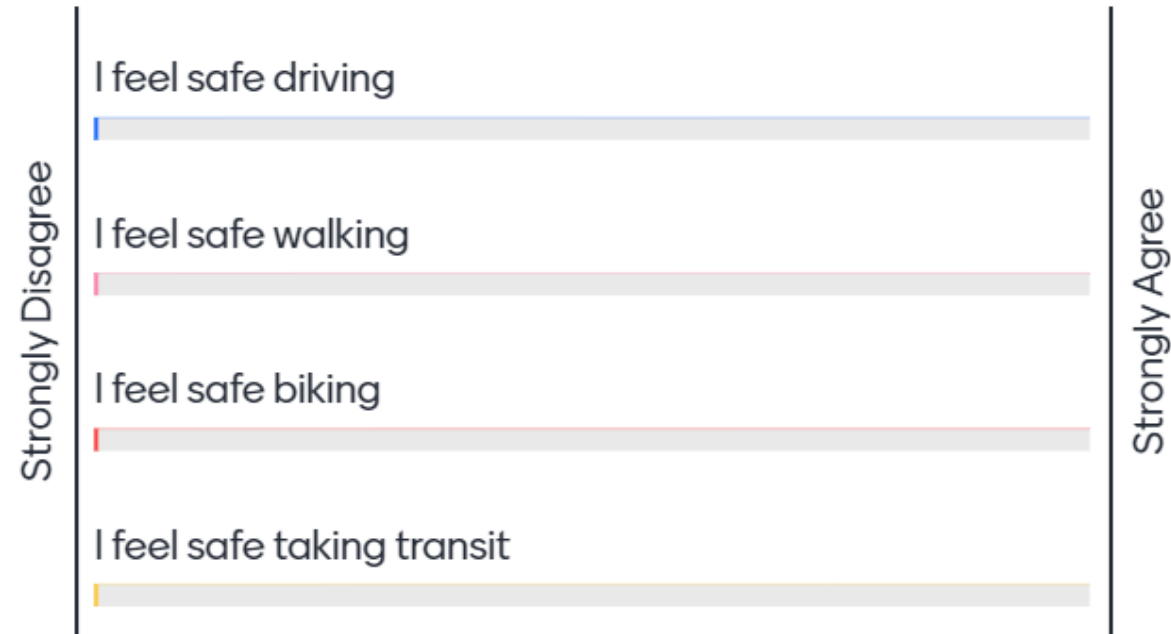
High Risk Network



* Equivalent Property Damage Only

03 Mentimeter Survey

How do you relate to the following statements based on your experience traveling in Mesa, taking into account the risk of being involved in a crash?



What concerns do you have related to transportation safety in Mesa?

Open response



Which driver behaviors are of greatest safety concern to you?

Speeding

Impaired Driving

Distracted Driving

Lack of Seatbelt
Use

Red Light Running

Driver Inexperience
& Older Drivers



Which locations of the transportation network are of greatest safety concern to you?

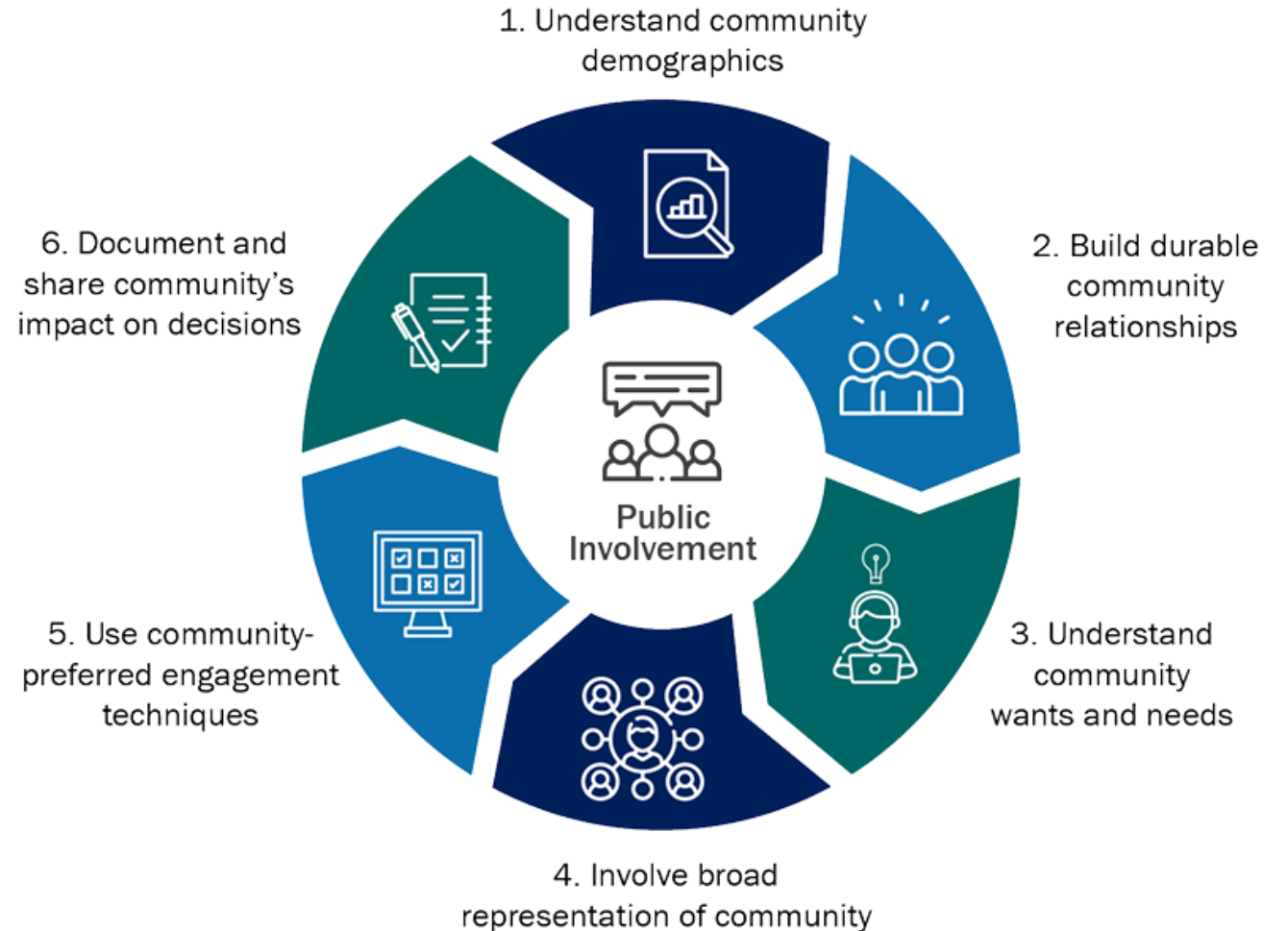
- Intersections
- Crosswalks
- Local Streets
- Main Roads
- Turn Lanes
- Sidewalks
- Driveways
- Bike Lanes



04 Public Engagement



Approach





Planned Events & Activities

Phase One: April – May

- CycloMesa – April 6th
- Celebrate Mesa – April 13th
- Bike to Work Day – April 19th
- Virtual Event - TBD



Phase Two: Fall 2024

- Presentations: TAB & Council
- Draft strategies available For public feedback
- Safety Pledge

Phase Three: Post Plan Adoption

- Website management
- Quarterly engagement summaries

05 Next TAB Touch Point



Expected Agenda

- Next TAB Meeting (5/21) Agenda:
 - Present Safety & Equity Analysis Results
 - Present Preliminary Engagement Feedback From Phase One Community Touchpoint Events
 - Present Preliminary Road Safety Focus Areas

06 Q&A

